

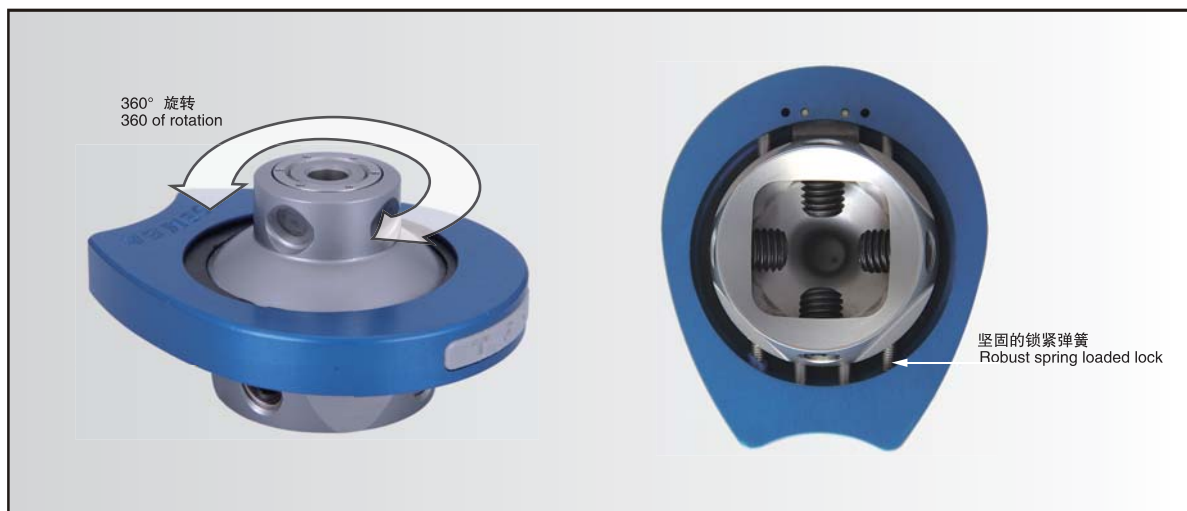
62588

○ 小体积 大智慧

此盘腿器是大腿截肢病人可以附加使用的产品。它可以将病人的关节和接受腔之间的角度进行改变，让进出更方便，比如开车。

The Trans-Femoral Rotator can be additionally used by above-knee amputees. It is capable to change the angle between the patient's joint and the socket, making entering into and out more convenient, such as driving.

产品特点/Product Features



此盘腿器是大腿截肢病人可以附加使用的产品。它可以将病人的关节和接受腔之间的角度进行改变，让进出更方便，比如开车。

- ◆ 仿生力学安全锁；
- ◆ 超薄空间设计，简洁、美观、大方；（安装高度21mm）
- ◆ 操作灵活，使用方便，可单手操控开关；
- ◆ 效果更好，可以盘腿而坐，进出车辆；
- ◆ 自动重锁功能；
- ◆ 360° 旋转；
- ◆ 适用性更强，适合中长、短，各种大腿残肢；
- ◆ 材质轻巧，强度更高（产品自重176g,最大承重136KG）。

The Trans-Femoral Rotator can be additionally used by above-knee amputees. It is capable to change the angle between the patient's joint and the socket, making entering into and out more convenient, such as driving.

- ◆ Bionic mechanical safety lock;
- ◆ Ultra-thin space design, simple, elegant appearance; (Build height 21mm)
- ◆ Easy operation, easy to use, one-handed switch manipulating;
- ◆ Effects better, permits cross-legged sitting, go into and out of the vehicle;
- ◆ Automatically re-lock function;
- ◆ 360 ° rotation;
- ◆ Stronger applicability, suitable for various above-knee amputees of medium, long or short stump;
- ◆ Lightweight material , higher intensity (product weight 176g, maximum loading 136KG).

技术规格/Specifications

最大承重/Weight Limit	旋转/ Rotation	重量/Weight	安装高度/Build height
136kg	360°	176 g	21 mm